



Solidarity & Equity in AI Ethics

Presented by:

Amine Ais

Bayron Arevalo Loja

Hiruka Ahelapa Gamage

CS312- Research Methods



Outline



- Solidarity/Equity Case
- The Problem (Why fairness Fails)
- What is Solidarity & Equity?
- Philosophical Foundations
- Fairness vs Equity
- Thought Experiment
- Real-World Impact of AI
- Tradeoffs & Challenges
- Conclusion

Solidarity/Equity Case

- Exams canceled during pandemic
- How should colleges admit students?
- AI predicts grades from past data
 - Some students never got a chance
 - Creates a fairness issue (no equal opportunity)
- Problem: favors elite schools
 - Leaves certain groups behind
 - Increases divide between privileged vs others



The Objection

Looks fair, but not everyone had equal chance

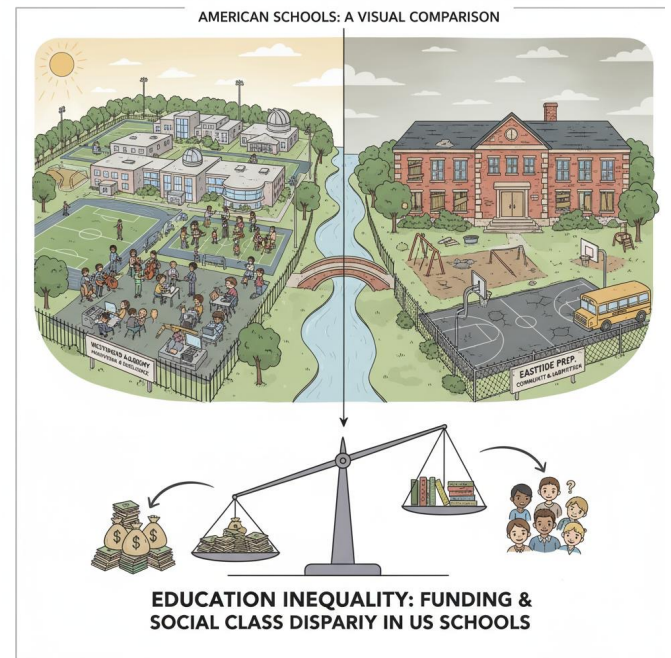
Some students were excluded before being evaluated

- Reinforces inequality

Uses past data that already favors elite schools

- Focuses too much on individuals

Ignores the goal of keeping society inclusive (no one left behind)



Why Fairness is Not Enough

- Focuses only on individuals
- Ignores group inequality
- Reinforces existing bias
- Can divide society



A Possible Solution

- Select top students from each school
 - Ensures everyone has a chance to be considered
 - Fixes the issue where some students were excluded from the start
- Distributes opportunity across regions
 - Reduces bias from historically elite schools
- Helps underrepresented groups
 - Promotes equity (no one left behind)
 - Creates a more balanced and inclusive student body





Why Solidarity Matters



Promote unity in society



Reduces inequality



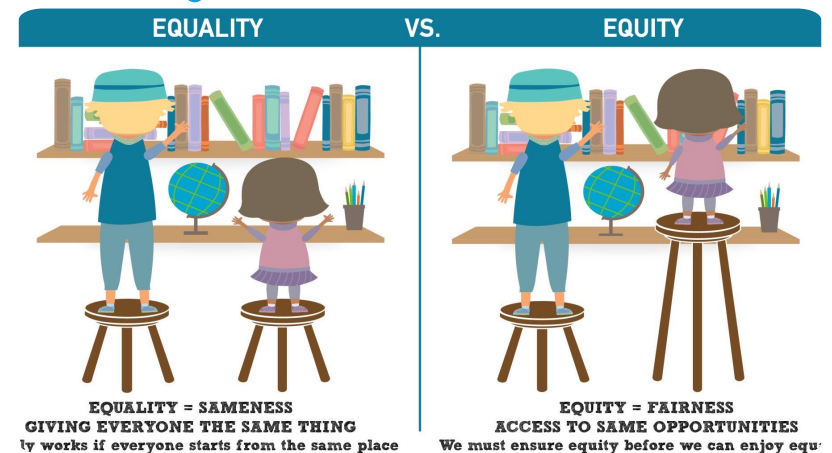
Prevents social division



“No one left behind”

What is Solidarity/Equity?

- Focus on the group, not just individuals
- Goal: support the least advantaged
- Emphasis on inclusion
- Give more help to those who need it most
- Focus on fair outcomes, not just equal chances



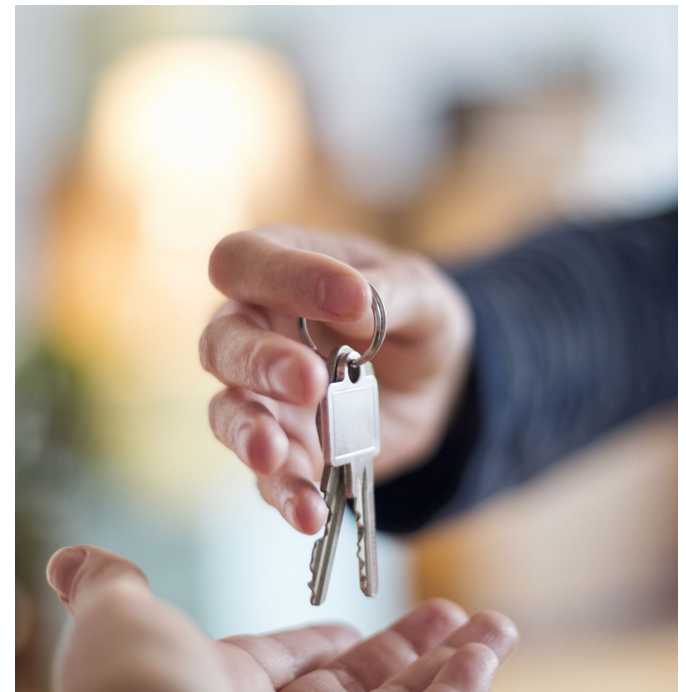


Philosophical Foundation

- “Veil of Ignorance”
 - You don’t know your position in society
 - Leads to fair, unbiased decisions
- Difference Principle:
 - Inequality is OK only if it helps the worst off
 - Gives the most benefit to the least advantaged
 - Supports equity (no one is left behind)

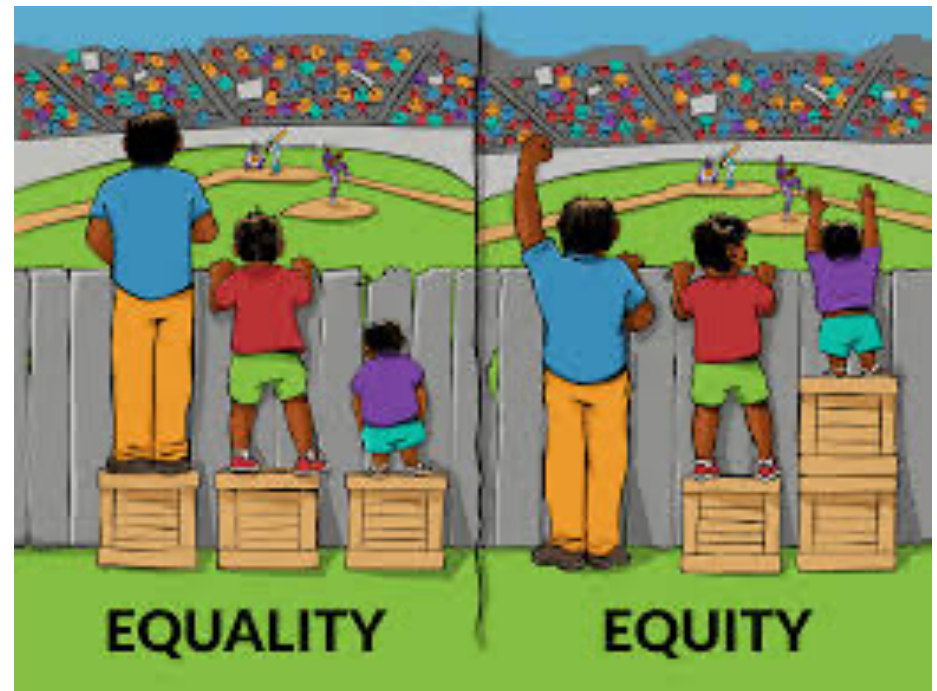
Key Principles of Equity

- Max/Min Strategy
 - Best outcome for the worst-off
- Inclusiveness
 - Everyone gets a fair chance
- Society > Individual



Visual Idea

- Fairness = everyone gets same box
- Equity = people get what they need



Thought Experiment

- One person needs it more
- One person contributed more
- Who should get it?
 - Fairness → split equally
 - Equity → give more to person in need

F + E

Both get ½ cookie
(Assume equally hungry)

NF + E

Person who overslept breakfast gets cookie (to alleviate hunger)

F + NE

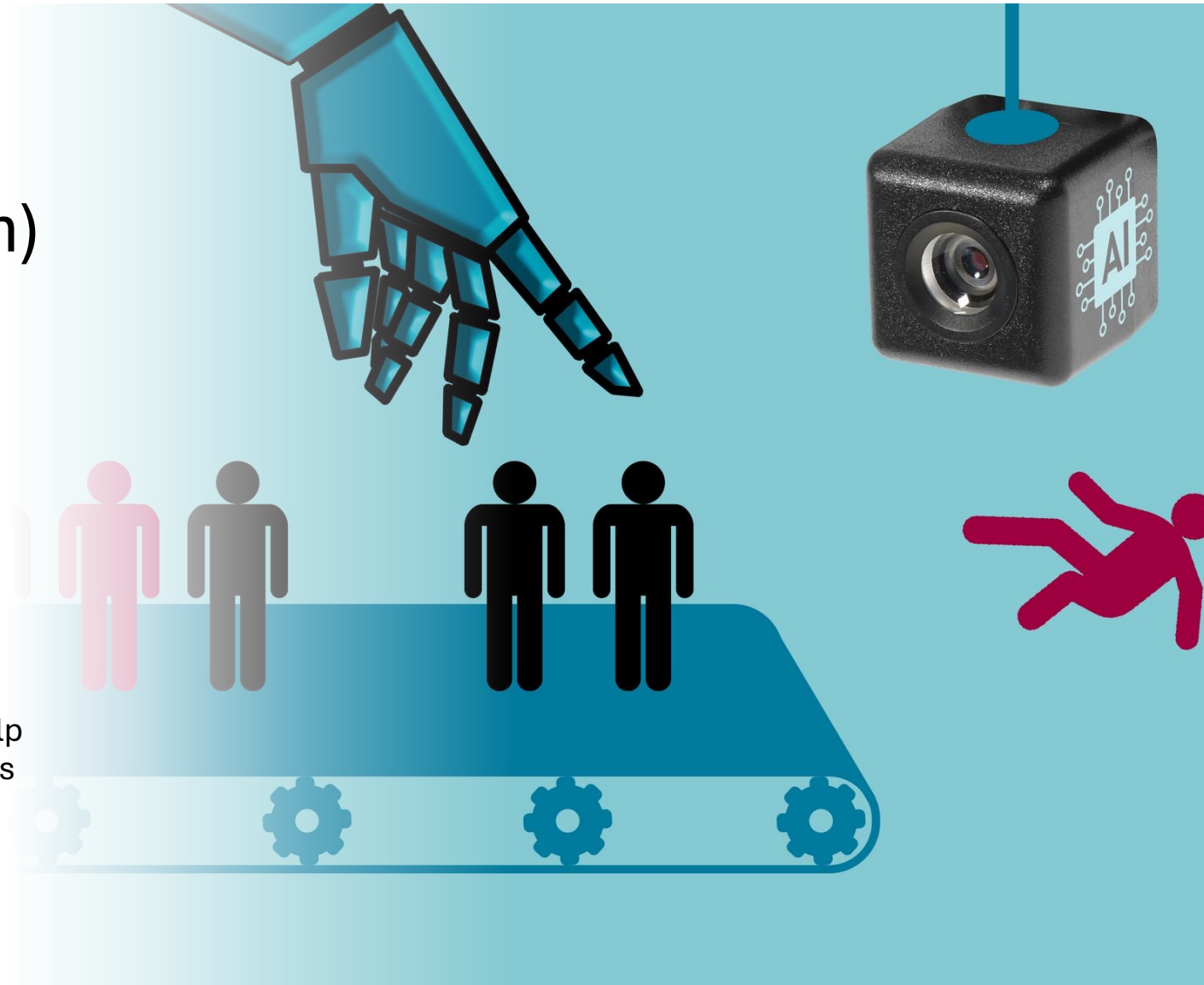
Lottery, 1 person gets cookie

NF + NE

One eats cookie while other distracted

Real World Example (Tech)

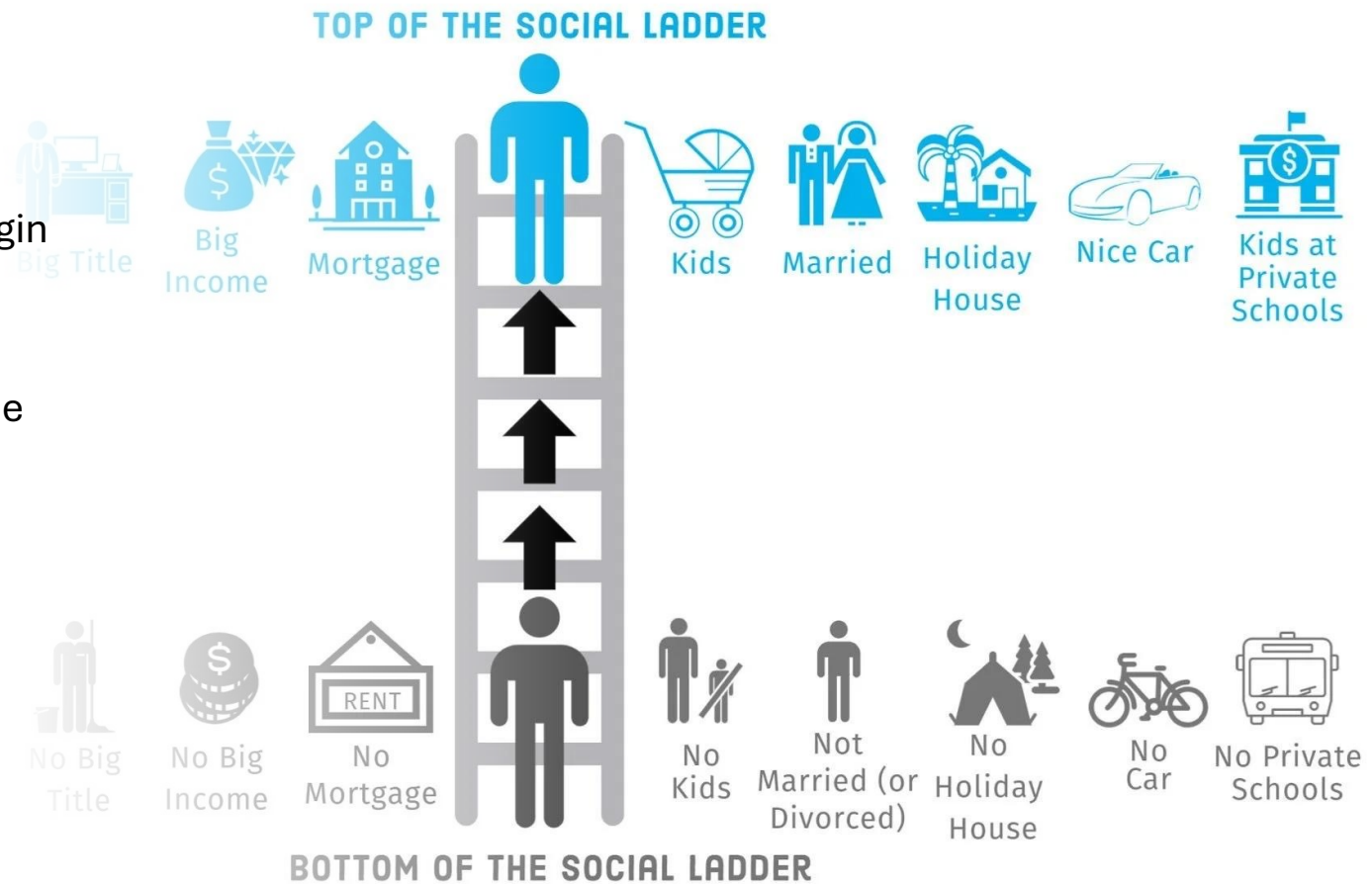
- AI hiring systems
- AI college admissions
- AI healthcare
- What is the problem:
 - AI reflects existing inequality
- Equity solution:
 - Adjust systems to help disadvantaged groups



Why Solidarity Matters

- Society is not equal to begin with
- Data reflects past bias
- Pure fairness can reinforce inequality

The Social Ladder



Big Question

- Should we:
 - Treat everyone the same?
OR
 - Help those who need it most?



Nozick Critique (Fairness vs Equity)



Voluntary choices can still
create inequality



Wilt Chamberlain example
(voluntary payments
create wealth gaps)



Redistribution may violate
fairness



Shows direct conflict
between fairness and
equity principles

AI Deskilling Problem

- AI replaces human jobs (radiology, writing, etc.)
- Rapid automation may cause mass job loss
- Skills may decline over time (deskilling)
- Equity concern: groups may be left behind economically

Equity Tradeoff - Surveillance Risk



REQUIRES LARGE
AMOUNTS OF
PERSONAL DATA



TRACKS INCOME,
BEHAVIOR,
BACKGROUND



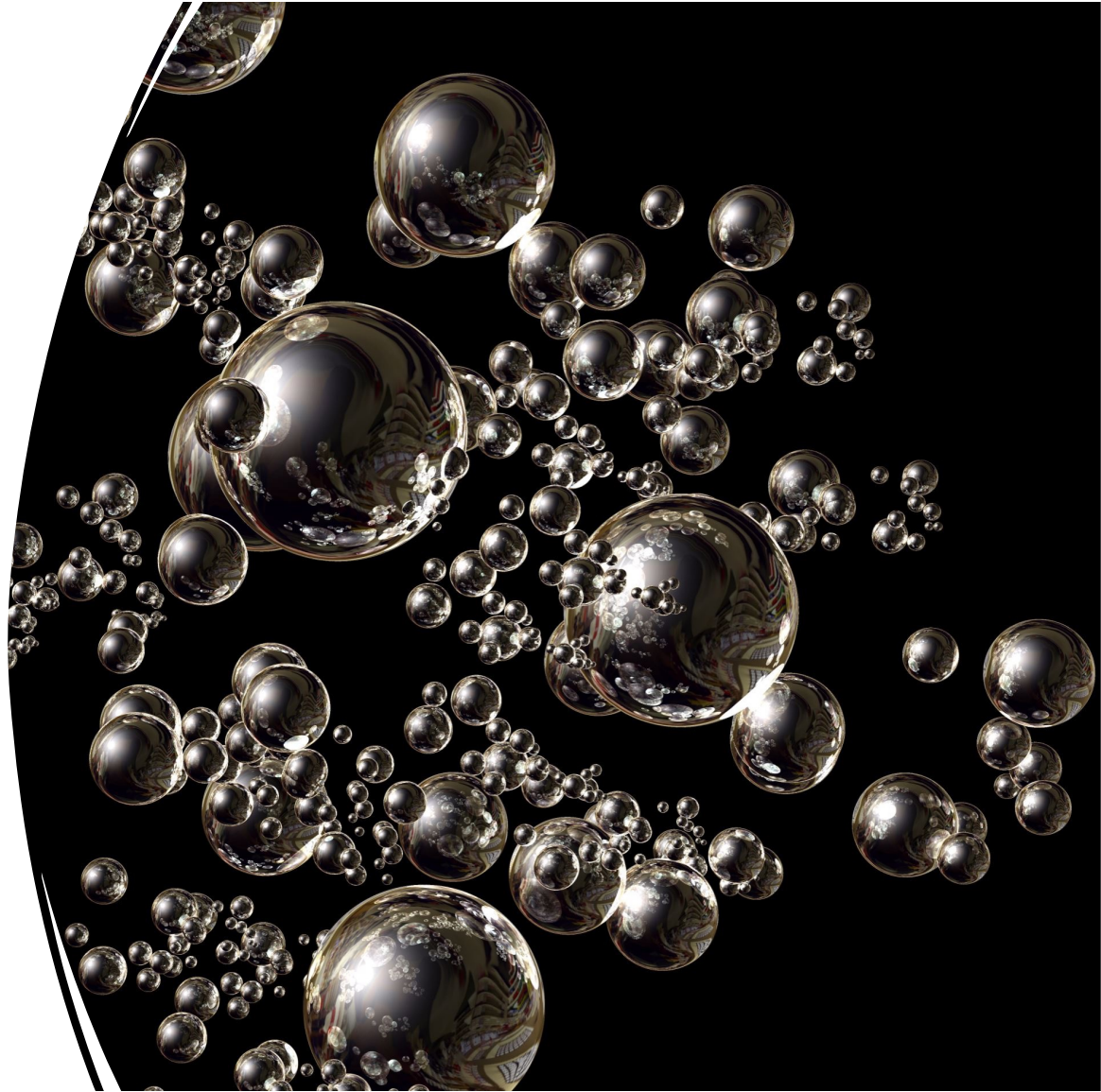
RISK OF
SURVEILLANCE
SYSTEMS



“HOW MUCH
PRIVACY SHOULD WE
SACRIFICE?”

Filter Bubbles & Polarization

- Algorithms show personalized content
- People become isolated in interest groups
- Increases political and cultural polarization
- Reduces shared social experience → weakens solidarity





Autonomy vs Equity Trade off

- Equity increases inclusion but reduces individual freedom
 - May require redistribution or behavioral constraints
 - Conflicts with personal choice and autonomy
 - No perfect solution—ethical tradeoff required



Privacy & Hyper-Equity

- Equity systems need detailed personal data
 - Includes health, income, education, behavior
 - Raises major privacy concerns
 - Extreme equity → high surveillance society

Conclusion



Fairness & Equity
are not the same

Equity focuses
on outcomes
and inclusion

AI must consider
social context,
not just data

